

MONTHLY MEMBERSHIP PROGRESS REPORT

District 4 C6

Results as of: 4/30/2026

GMT:

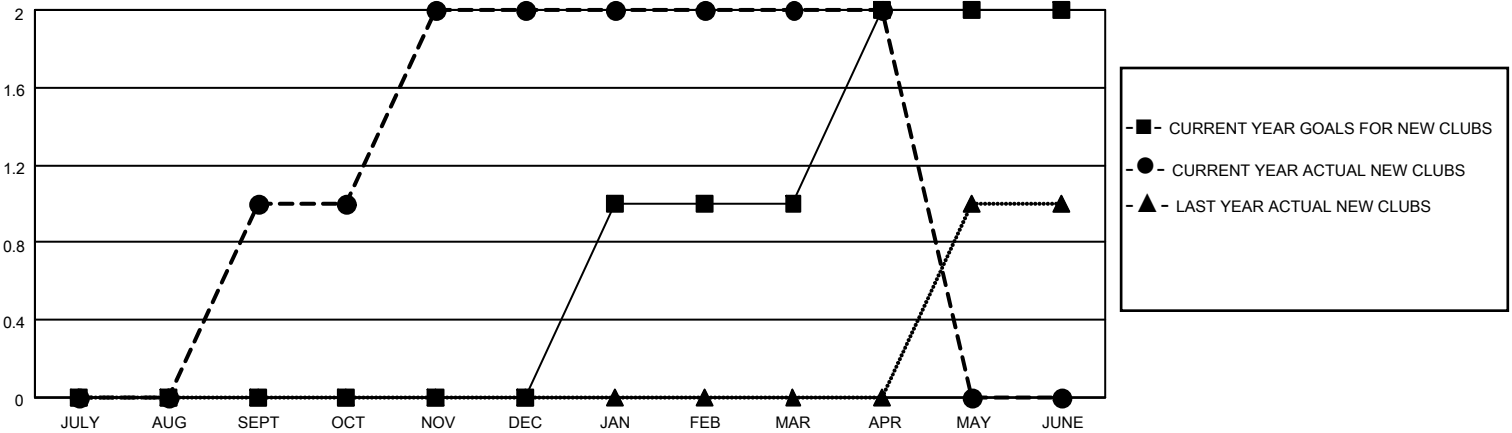
LOCATION CALIFORNIA

GMT CA

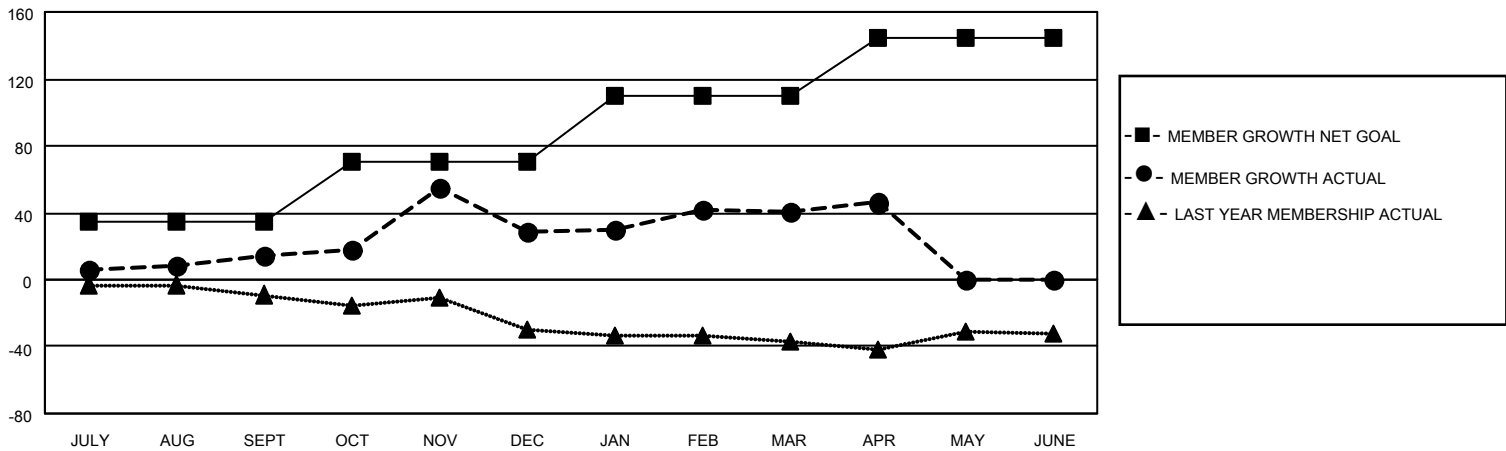
Clubs			
RESULTS FOR 2025-2026			
QUARTER	NEW CLUB GOAL	NEW CLUBS	DROPPED CLUBS
JULY/AUG/SEPT	0	1	0
OCT/NOV/DEC	0	1	0
JAN/FEB/MAR	1	0	0
APR/MAY/JUNE	1	0	0

Members			
RESULTS FOR 2025-2026			
QUARTER	MEMBER GROWTH NET GOAL	MEMBER GROWTH ACTUAL	DROPPED MEMBERS ACTUAL (including transfers)
JULY/AUG/SEPT	35	62	42
OCT/NOV/DEC	35	65	44
JAN/FEB/MAR	40	38	22
APR/MAY/JUNE	35	21	14

GOALS AND ACTUAL NEW CLUBS CUMULATIVE



GOALS AND ACTUAL MEMBERS CUMULATIVE



DROPPED CLUBS: 0

28 CLUBS OF 41 ADDED 1 OR MORE NEW MEMBERS

GENDER DISTRIBUTION

MALE 526 (51.57%)
FEMALE 493 (48.33%)

DROPPED MEMBERS

DECEASED	6
CLUB CANCELLED	0
OTHER	115
TOTAL	121

[CLICK HERE FOR CUMULATIVE MEMBERSHIP DATA](#)

TOTAL FAMILY UNIT MEMBERS	152
FAMILY MEMBERS PAYING HALF DUES	79